

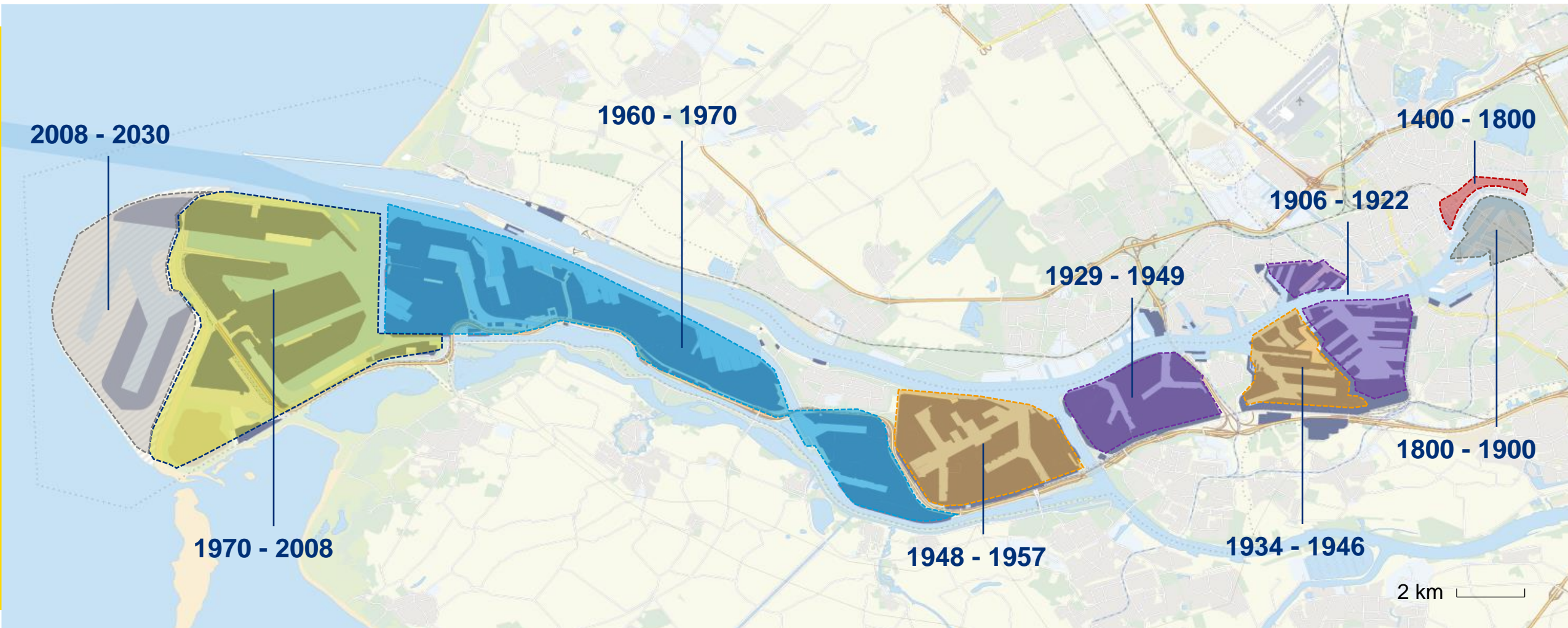
# PORT OF ROTTERDAM

## EUROPE'S LARGEST ECO-SMART PORT





# Port of Rotterdam developed over time...



# Port of Rotterdam 2018– Engine of the economy

Total Throughput <b>469</b> million tons	Ranking <b>#1 Europe</b> <b>#10 World</b>	Containers <b>14,5 mln TEU</b>	Port Infrastructure <b>#1 worldwide</b> (World Economic Forum)
Total employment <b>385.000</b> people	Total Added Value <b>€ 45,6 billion</b> (6.2% GDP)	Ship visits Seagoing: <b>29,475</b> Inland: <b>120,000</b>	Profit <b>€ 187 mln</b> (€ 712 mln revenues)
Port area <b>12,643 ha</b>	Depth up to <b>75 ft / 24 m</b>	Market Share <b>60%</b> (Hamburg – Le Havre Range)	Annual investments <b>± € 400 mln (PoR)</b> <b>± 1,8 bln (private)</b>

# We are a publicly-owned, business driven port developer

→ Equity stake    ↔ Client relationship    ↔ Other

## Public Shareholders

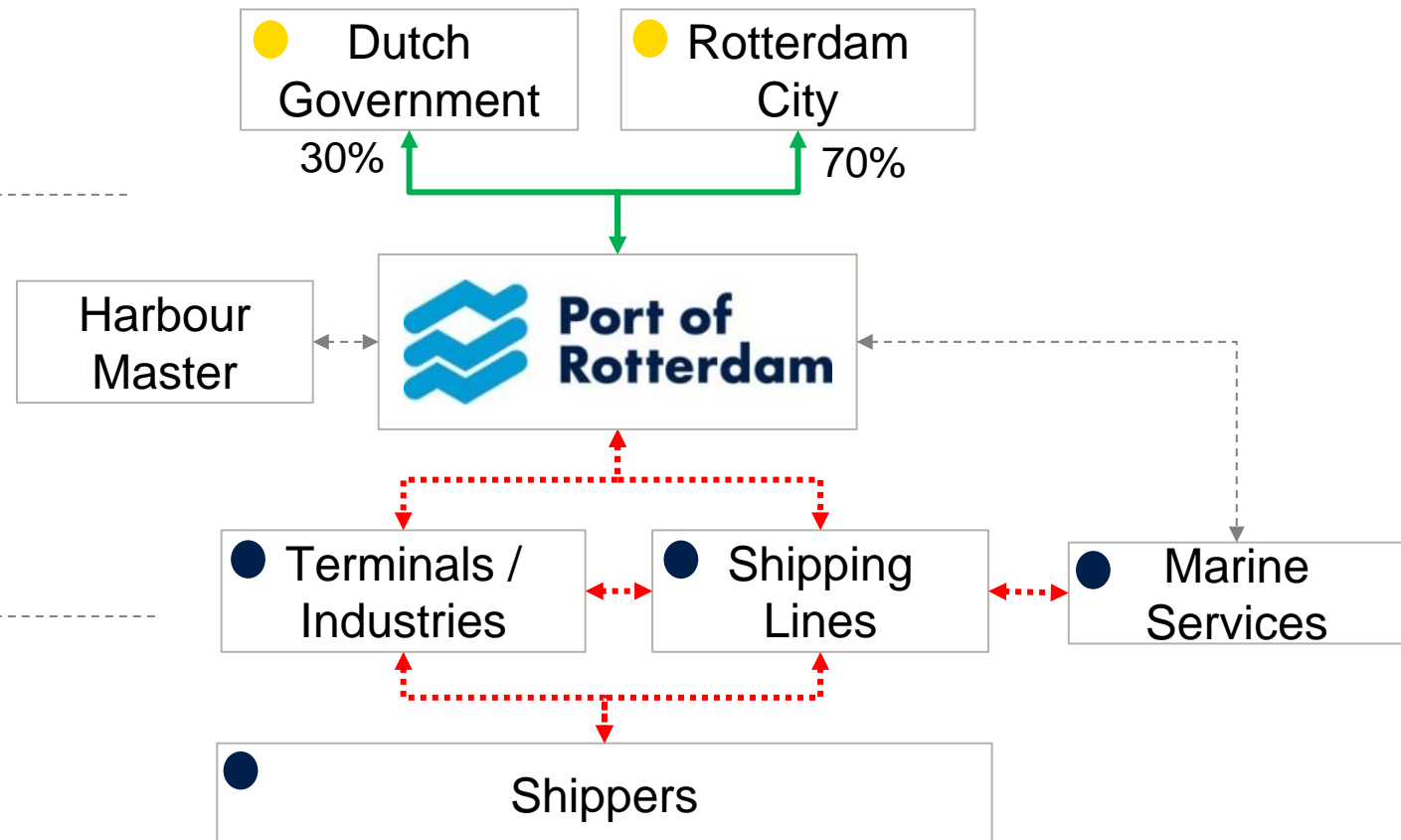
- National / local government
- Provide strategic guidance
- The land in the port is owned by the City of Rotterdam

## Port Development Company

- Run as a business
  - Responsible for development of the port area
  - Leases land and infrastructure to terminals / industries
  - Collects port dues from shipping lines
- Harbour master: Responsible for safety and security
- Authorizes marine service providers
- Stimulate new developments and innovations

## Private companies

- Operate terminals, cargo handling
- Conduct industrial activities
- Ship cargo
- Provide maritime services



# We manage the port according to the landlord model

## BUSINESSES

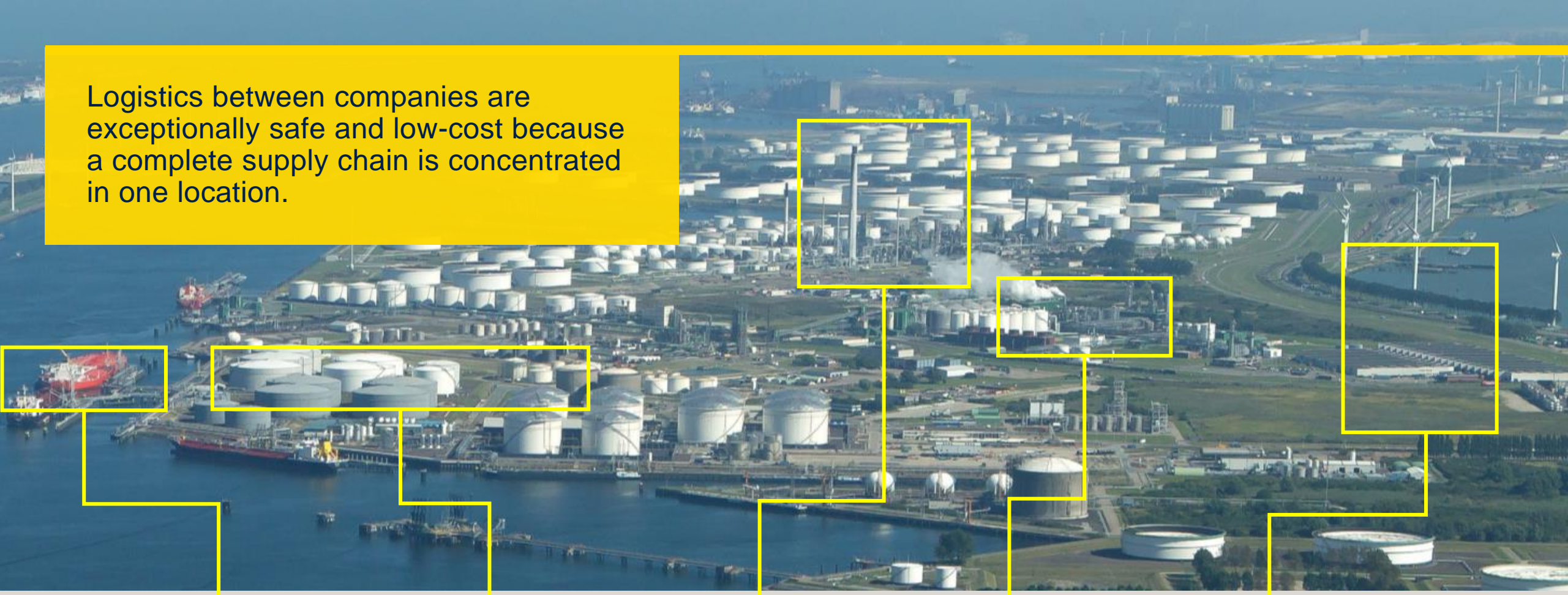
HARDWARE, BUILDINGS, PERSONEL ETC.



**PORT OF ROTTERDAM**  
WATERWAYS, TERRAIN AND INFRASTRUCTURE



Logistics between companies are exceptionally safe and low-cost because a complete supply chain is concentrated in one location.



Shipping



Tank terminal



Refinery



Chemicals



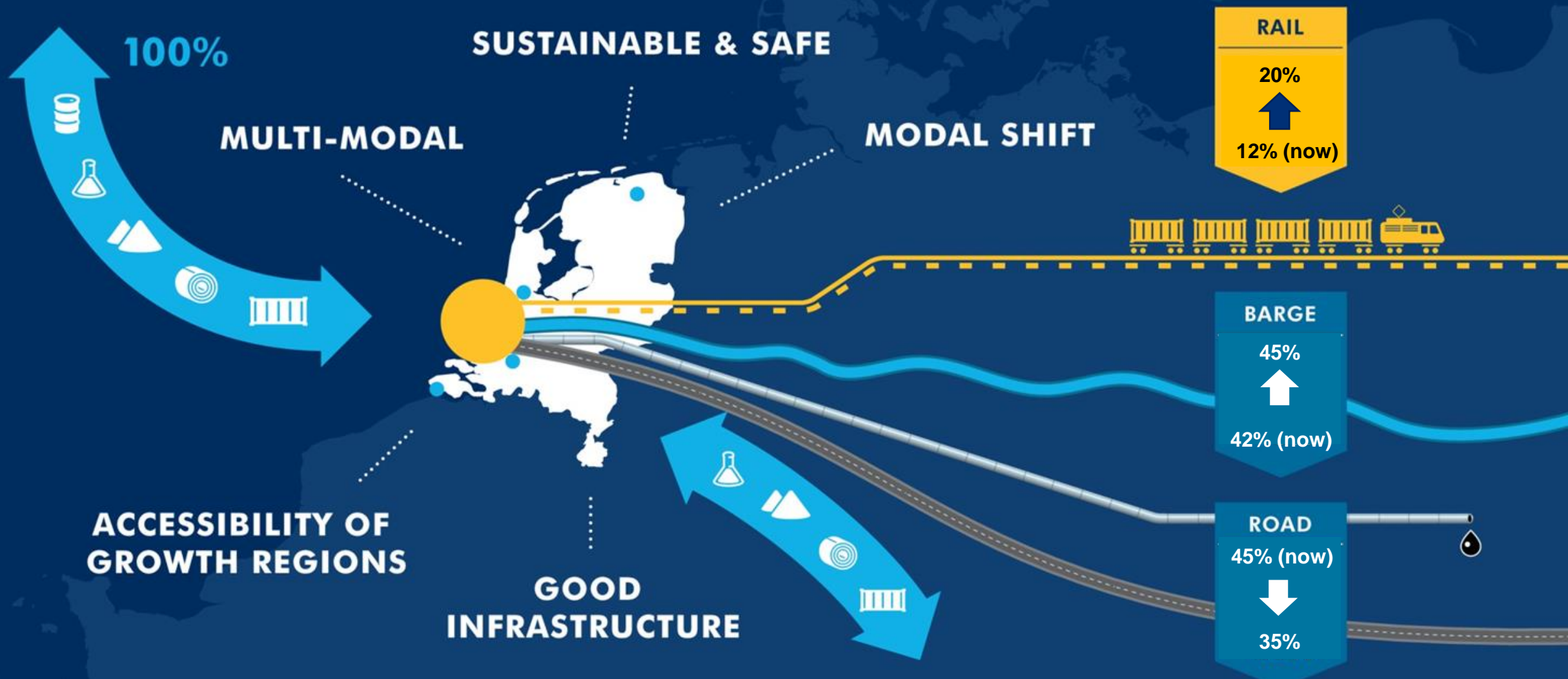
Distribution

**We believe very strongly in clustering activities**



# 500 million consumers within 24 hours reach







# Sustainability: Scope and influence PoR

## Port of Rotterdam Authority



Influence: ++++  
Effect: +

## Port and industrial area



Influence: +++  
Effect: ++

## Chain



Influence: +/-  
Effect: ++++

# Sustainability in actions

## Port of Rotterdam Authority



- Fleet using low-sulfur fuel
- Use of soot filters and catalytic converters on new vessels
- Three hybrid patrol boats (from 2016 on)
- 'Green' flights and green fleet of cars
- Climate neutral since 2011
- Active nature policy
- Clear assessment framework as basis for air-related measures and sustainability in allocation policy

## Port and Industrial Area



- Co-siting geared towards energy saving
- Container Transferium Alblaserdam
- Shared use of steam
- Residual heat from port used to heat homes and greenhouses in the region
- Voluntary agreement nautical service providers on use of low-sulfur fuel
- Shore-based power for inland shipping and StenaLine Hoek van Holland

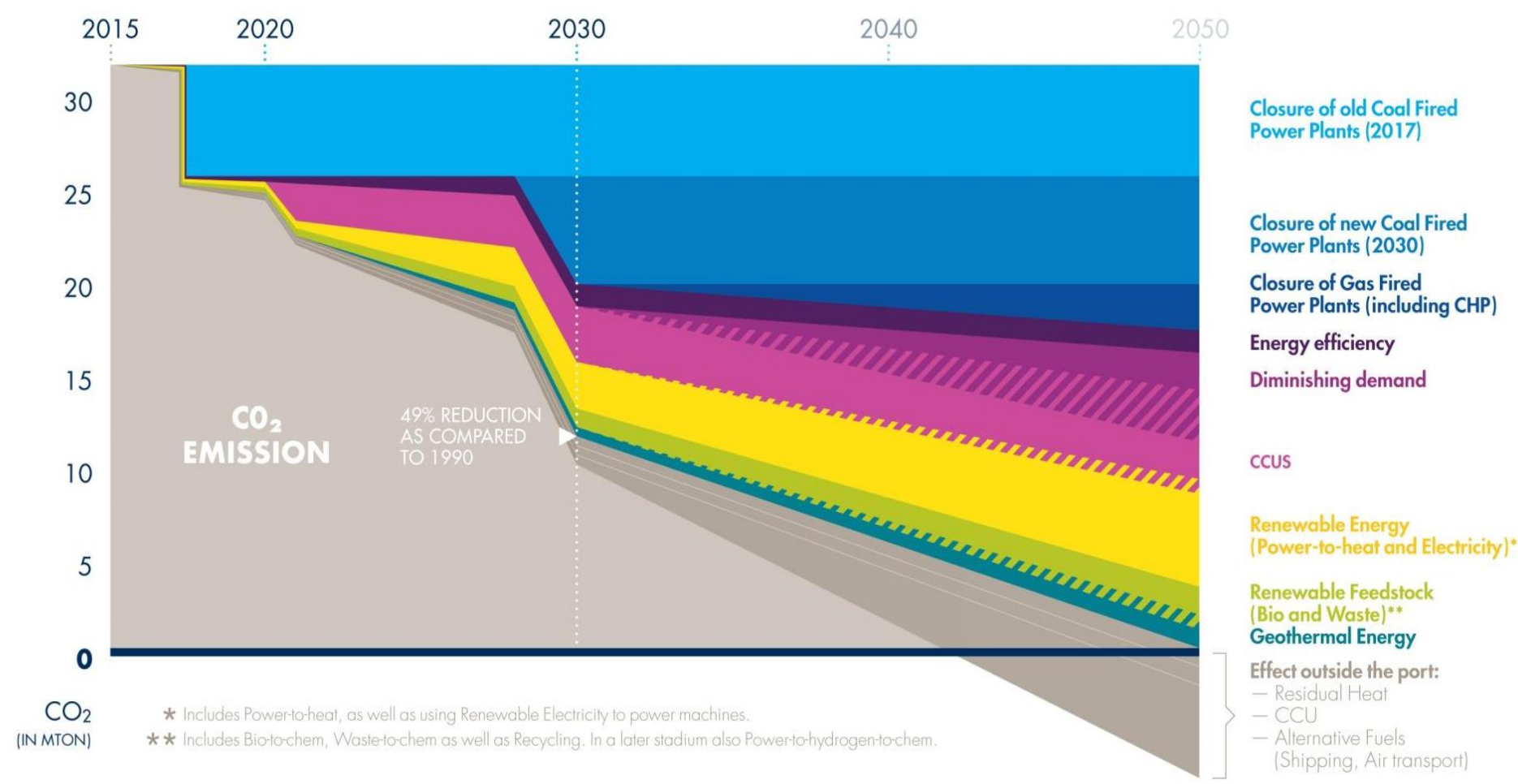
## Chain



- Modal split demands terminal Maasvlakte 2
- Environmental zone Maasvlakte 2
- Discount for clean ships with Environmental Ship Index (ESI)
- Encouraging clean engines in inland shipping
- Green Award for inland shipping
- Promote use of LNG as a transport fuel
- International cooperation with other ports: World Ports Climate Initiative



# Reduction CO2 emissions 2015 - 2030 - 2050





**Radityo Pradhana**

Port Development Consultant

[rd.pradhana@portofrotterdam.com](mailto:rd.pradhana@portofrotterdam.com)

